

**Paul Frewer Consulting Ltd**

EDUCATIONAL FURNITURE PROCUREMENT & IMPORT CONSULTANCY



**Contract Range**

## Benching



**Viscount** – This bench desking provides a large surface area for multiple users. Aluminium framed screens with integrated management rails allow monitors to be raised off the desk surface for economy of space. Cable management is via cable trays under the desk surface. The tops are fixed and available in rectangular, wave, double wave and angled shapes. Finish options: Apple, Ash, Beech, Grey, Oak, Pear, Walnut and White.

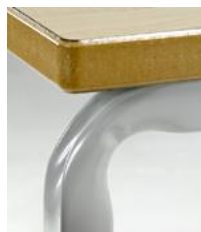


**The Amberley+ Range -** Designed to combine style and practicality. The distinctive twin upright leg with optional cable riser for in-built cable management provides a fresh modern look. A wide selection of workstation shapes and contemporary wood finishes combine to create an attractive and versatile range. Finish options: Apple, Ash, Beech, Grey, Oak, Pear, Walnut and white.



**The Amberley Range -** A fully coordinated cantilever desking system with an extensive range that is both functional and stylish. Workstations, pedestals and storage options offer different solutions to meet the requirements of the modern school or office. Optional extras include cable riser and cable tray. Available in 18mm or 25mm tops with graphite or silver frames and trim. Finish options: Apple, Ash, Beech, Grey, Oak, Pear, Walnut and white.

**The Argyle Range** - A rectangular stackable table incorporating a laminated balanced mdf worktop with bullnosed polished mdf edges. A 30mm square steel frame giving a thicker, stronger look and feel. Finished in an epoxy powder coated finish to RAL 9006 (white aluminium). Various configurations and sizes available in rectangular, square, trapezoidal, circular and half circular.



**The Denbigh Range** - A rectangular table incorporating a laminated balanced mdf worktop with bullnosed polished mdf edges. A chunky 50mm circular steel frame finished in an epoxy powder coated finish to RAL 9006 (white aluminium) giving a bespoke designer feel with style and practicality in one. Various configurations and sizes available in rectangular, square, trapezoidal, circular and half circular.

**The Roxburgh Range** - A rectangular stackable table incorporating a laminated balanced mdf worktop with bullnosed polished mdf edges. A 25mm square steel frame finished in an epoxy powder coated finish to RAL 9006 (white aluminium). Various configurations and sizes available in rectangular, square, trapezoidal, circular and half circular.



**The Earlswood Range** - These pupil tables are great for the modern school environment where flexibility of space is essential. They have been designed to adapt to personalised learning styles and also to encourage children to learn from each other. Ideally suited for extended learning zones and breakout areas that are being planned into our new secondary schools as part of the Building Schools for the Future (BSF) project. Duraform spray PU edging. Extremely hard wearing, impact resistant, environmentally friendly compared to traditional PU as less required to achieve the same outstanding results. Also waterproof, modern and supplied on an MDF core for added strength and durability. Optional bullnosed polished MDF edges.



**The Archdale Range** - These pupil tables are great for the modern school environment where flexibility of space is essential. Flexible table sizes that can be laid out in many configurations creating an exciting environment for learning. Duraform spray PU edging. Extremely hard wearing, impact resistant, environmentally friendly compared to traditional PU as less required to achieve the same outstanding results. Also waterproof, modern and supplied on an MDF core for added strength and durability. Optional bullnosed polished MDF edges.

**The Rosedene Range** - These pupil tables are great for the modern school environment where flexibility of space is essential. Various table sizes and a truly unique shape creates an exciting environment for learning. Duraform spray PU edging. Extremely hard wearing, impact resistant, environmentally friendly compared to traditional PU as less required to achieve the same outstanding results. Also waterproof, modern and supplied on an MDF core for added strength and durability. Optional bullnosed polished MDF edges.



**The Wedgemoor Range** - These modular tables provide the ultimate flexibility. Can be clustered together in small groups or in rows for presentations. Duraform spray PU edging. Extremely hard wearing, impact resistant, environmentally friendly compared to traditional PU as less required to achieve the same outstanding results. Also waterproof, modern and supplied on an MDF core for added strength and durability. Optional bullnosed polished MDF edges.

**The Malham Range** - A traditional laboratory stool which offers that bit extra, with chunky seats in attractive wood finishes including solid beech and a clever stacking design which keeps the seats apart to avoid scratching. 5 seat heights, and various seat and frame colours available.



**The Langdale Range** - Specified for major projects countrywide because of their unique seat shape with integral lumber support. Add to this a robust steel frame with a well positioned footrest produces a winning combination. Available in 5 seat sizes with a choice of 5 seat colours and 7 frame colours provides a multitude of options. Additional options include steel feet where highly abrasive non-slip flooring is used or a tilt and glide foot. Now available as a skidbase option.

**The Avonmore Range** - This brand new stackable chair is fresh and stylish and comes in a range of modern colours. Available in size marks 1 to 6 covering ages 3 through to 18 years. Superb chair for Academies and BSF build projects, being design led and very affordable. Available in 4 legged and skidbase options.





**The Sherborne Range** - Standard stackable polypropylene shell chair with high tensile 1.6mm steel frame and legs. Powder coated. Legs come complete with plastic end protection caps. Product is designed for severe educational use. Available in size marks 1 to 6 covering ages 3 through to 18 years.



**The Oxburgh Range** - A multipurpose range of classroom, conference, training, hospital and reception room seating. Stacking chairs are available with either black or silver frames. Available in Grey, Black, Red and Blue.





## Operator Chairs

**The Oxburgh Range** - A design led and very cost effective chair. The configuration of the moulded single polypropylene shell gives a sturdy yet flexible feature for comfort. Available in Grey, Black, Red and Blue.



**5** YEAR  
GUARANTEE



**The Romsey Range** - Mid back twin lever chair. These chairs are very cost effective and are upholstered in contract quality fabric. Available also in high back and executive back, with or without arms.

**5** YEAR  
GUARANTEE

## Dining Chairs

**The Windsor Range** - All-in-one polymer stackable chair of unique contemporary design. Durable, lightweight and easy to clean. 100% recyclable, selection of 9 colours and guaranteed for 10 years. Also ideal for informal and break-out areas.



**10** YEAR  
GUARANTEE



**The Moreton Range** - An attractive curved design in laminated beech and chrome. A popular stackable cafe chair that offers an elegant and practical solution for dining or casual seating areas.

**5** YEAR  
GUARANTEE

**The Clarendon Range** - All-in-one high impact polypropylene stackable chair designed to provide exceptional strength and stability. Rounded edges for comfort, safety and easy cleaning. 100% recyclable. Injection moulded and a choice of 9 colour options.



**5** YEAR  
GUARANTEE

**The Powis Range** - One of the most versatile stacking chairs available today. It is ideal for any multi-seating environment such as training rooms, conference halls and lecture theatres. It has a deep curved back and contoured seat with black oval frame.



**5 YEAR GUARANTEE**



**The Rushmore Range** - Heavy duty stacking chairs, strongly constructed with a 25mm round tube in black with generous extra wide upholstered seats and backs. Particularly well-suited to areas of frequent use like waiting rooms and conference applications. Available as a side chair and armchair with upholstered arms.

**15 YEAR GUARANTEE**

**The Sheringham Range** - A multi functional stackable chair with a tweed upholstered seat and back, and incorporating a stylish chrome frame. Ideal for conference and waiting areas.



**2 YEAR GUARANTEE**

## Reception Seating

**The Morville Range** - Round 32mm diameter tubular framed reception seating upholstered with extra deep seat and back upholstery. Available as a unit chair, single arm chair (LH or RH when seated) and an armchair.



**15** YEAR  
GUARANTEE



**The Dunster Range** - This 19mm square black framed chair is strong and functional and easily stored and is therefore ideal in waiting areas and multi-functional spaces where strength and versatility are important. Seat and back are padded with high quality C.M.H.R foam. Stackable for ease of storage. Also available with polished wooden arms.

**15** YEAR  
GUARANTEE

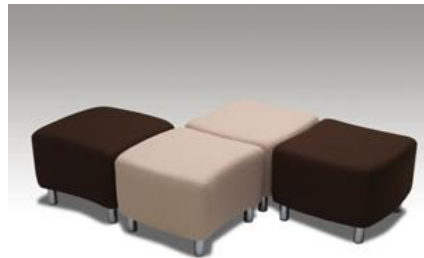


**The Furness Range** - A slimline yet robust range of reception or lounge seating designed primarily for heavy traffic areas such as student lounges or staff rooms. Available with or without arms with a matching square and rectangular coffee table to complete the range.

**10** YEAR  
GUARANTEE

Our soft seating range is both simple and flexible. The range of occasional low level modular seating available in triangular, wave or rhombus shapes can be combined to create a multitude of shapes and designs. Ideal for breaking up large open plan spaces and creating informal meeting areas. Available in a wide choice of colours.

**Triangular Seating Range**



**Wave Seating Range**

**Rhombus Seating Range**



**The Flatford Range** - These modular units have a solidly constructed frame and elasticised webbing in the seat for superior comfort. Numerous configurations can be created to suit any reception or waiting area.



**The Melbury Range** - An ideal choice for schools, colleges, breakout areas and informal teaching environments. The angled and square stools can be used to create a multitude of informal seating arrangements.



**The Arnside Range** - High quality cabinets at economical prices manufactured to meet British standards for strength and stability. This low mobile steel 3 drawer under desk pedestal is of a wave front design, has central locking and 5 castors for that extra support for the filing drawer when being opened. Silver finish only.

**The Boscobel Range** - High quality cabinets at economical prices manufactured to meet British standards for strength and stability. Fitted with recessed handles and drawer label holder, central locking and with anti-tilt to prevent more than one drawer being opened at a time.



Further examples of educational establishments which have utilised this range of furniture:

**The Big Wood School,  
Business & Enterprise College**

Part of the Nottingham BSF programme this brand new secondary school were fitted out by us with a vast range of products, including operator chairs, filing cabinets and wave pedestals etc..



**The Hadden Park High School**

A brand new secondary school where we furnished many areas, including that for soft seating and tamper proof operator chairs etc..

**Oak Field Special School & Sports College**

A brand new special needs school where we provided extensive special needs products and seating etc., which included reception and visitor chairs. Also to be utilized in this school is a brand new range of classroom chairs.





Specifically designed and engineered by Paul Frewer, to give exceptional quality, excellent value for money and a product that will be kept in stock for prompt delivery all the year round. These products are EN1729 compliant and have a 10 year guarantee.





Specifically designed and engineered by Paul Frewer, to give exceptional quality, excellent value for money and a product that will be kept in stock for prompt delivery all the year round. These products are EN1729 compliant and have a 10 year guarantee.



visit our website at:

**[www.paulfrewerconsulting.com](http://www.paulfrewerconsulting.com)**

or email us at:

**[sales@paulfrewerconsulting.com](mailto:sales@paulfrewerconsulting.com)**

or telephone us on:

**+44(0)1746 783857**